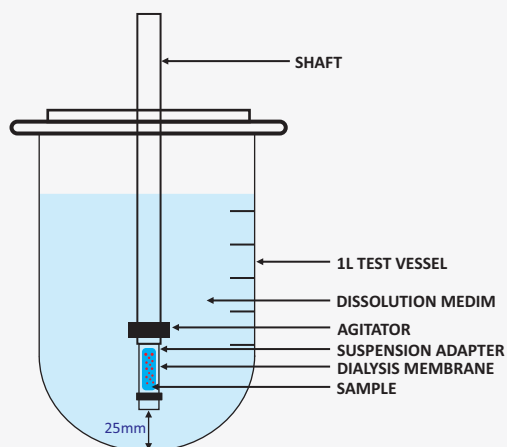


Suspension Adapter

Direct Introduction of Suspension

- ⊙ Irregularities in sample preparation and introduction
- ⊙ Suspension floating on top of the dissolution medium
- ⊙ Suspension sticking to the paddle shaft
- ⊙ Sampling errors
- ⊙ Increased variability, Decreased accuracy
- ⊙ Reproducibility concerns



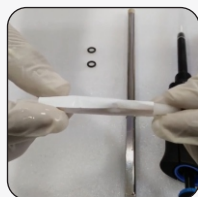
Suspension Adapter

- ⊙ Sample is confined in the adapter
- ⊙ Agitator ensures efficient mixing
- ⊙ No sample floating or sticking issues
- ⊙ No sampling errors
- ⊙ Decreased variability, Increased accuracy
- ⊙ No reproducibility concerns

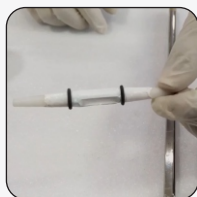
Preparation of Suspension Adapter



Attach the membrane inserting tool



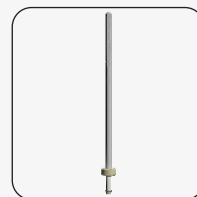
Slide the dialysis membrane on to the adapter



Secure the membrane with the o-rings



Add sample



Attach the adapter to the agitator and the shaft

Available Configurations

Suspension Adapter Types	Working Sample Volume	Dissolution Vessel Capacity		
		150 mL	250 mL	1000 mL
1 mL	Up to 1 mL	✓	✓	✓
10 mL	Up to 10 mL	✗	✗	✓

Dialysis Membrane

- Regenerated Cellulose and Cellulose Ester material
- Selection of the right MWCO dialysis membrane is critical
- For 1 mL adapter- required flat width- 16 mm
- For 10 mL adapter-required flat width- 34 mm



Accessories

0104A00529	Suspension Adapter Kit 1 mL for 1000 mL Volume	Quantity	0104A00530	Suspension Adapter Kit 1 mL for 250 mL Volume	Quantity
	1)Suspension Adapter for 1 ml	6		1)Suspension Adapter for 1 ml	6
	2)Membrane Insertion Tool for 1 ml	1		2)Membrane Insertion Tool for 1 ml	1
	3)O Rings for 1 ml	12		3)O Rings for 1ml	12
	4)Agitator for 1 ml	6		4)Agitator for 1 ml	6
	5)Suspension Adapter Shaft for 1 ml in 1000 ml	6		5)Suspension Adapter Shaft for 1 ml in 1000 ml	6

0104A00531	Suspension Adapter Kit 1 mL for 150 mL Volume	Quantity	0104A00532	Suspension Adapter Kit 10mL for 1000 mL Volume	Quantity
	1)Suspension Adapter for 1 ml	6		1)Suspension Adapter for 10 ml	6
	2)Membrane Insertion Tool for 1 ml	1		2)Membrane Insertion Tool for 10 ml	1
	3)O Rings 1 for ml	12		3)O Rings for 10 ml	12
	4)Agitator for 1 ml	6		4)Agitator for 10 ml	6
	5)Suspension Adapter Shaft for 1 ml in 150 ml	6		5)Suspension Adapter Shaft for 10 ml in 1000 ml .	6

Our Products

- Complete range of Dissolution Testers • Dissolution Media Preparator • Friability Testers • Tablet Hardness Testers
- Electromagnetic Sieve Shakers • Tap Density Tester • Bulk Density Tester • Powder Flow Tester • Leak Testers • Peristaltic Pumps

The information contained in this document is believed to be correct but ELECTROLAB accepts no liability for any errors and reserves the right to alter specifications without notice
February, 2020

ELECTROLAB (India) PVT. LTD. (CIN NO : U33110MH2002PTC136735)

Head Office: 401, Tirupati Udyog, I. B. Patel Road, Off. Western Express Highway, Goregaon (East), Mumbai - 400 063, India.

+91 - 22 - 4041 3131 sales@electrolabgroup.com

Factory: EL 23/24, T. T. C., Electronic Zone, M. I. D. C, Mahape, Navi Mumbai - 400 710, India.

+91 - 22 - 4161 3122 www.electrolabgroup.com

