

2  
Types

## Drums

**Friability Tester supports 2 types of drum :**

- ⊙ USP Standard drum
- ⊙ Abrasion drum (for more rigorous informational testing of tablet and coating integrity)

⊙

## Snap-lock™ mechanism

- ⊙ Single or double drums can be held in position by a Snap-lock™ knob
- ⊙ Ergonomic and error free operation

2  
Modes

## Operation

**The test can be performed in two different modes**

- ⊙ Timer mode
- ⊙ Counter mode

ABC123

## Alphanumeric keypad

- ⊙ Alphanumeric keypad to enter the product and sample information

QbD

## Quality by Design

- ⊙ Complies with USP, Ph. Eur, IP specifications
- ⊙ Automatic discharge of test samples into their individual trays
- ⊙ Loading of samples into the drum without removing the drum
- ⊙ Unique front loading system of the drum
- ⊙ Positive engagement of the drums with the drive prevents any slippage
- ⊙ 10° tilt of the drum with the bench top as per USP
- ⊙ Data for ten different drugs can be saved as protocols
- ⊙ Automatic drum positioning for loading new samples
- ⊙ Retention of programmed values in the memory of the instrument
- ⊙ Online validation of the revolution count and speed
- ⊙ Power failure detection allows remaining test completion on power resumption

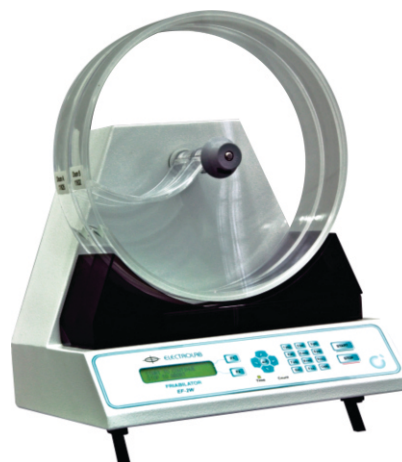
$f_x$

## Results

- ⊙ Results like % friability and weight-loss can be calculated

# Friability Testers

**Patented**



Weighing scale interface for  
Contech / Sartorius /  
Mettler /Essae / Ohaus balance



Dual Drum Friability Tester with Weighing Scale Interface (EF-2W)



Front loading



Tilt



Security with  
password



Multi Level  
Security



LAN (optional)

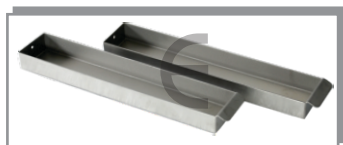


Print Report

## Standard accessories



Friability drum  
**EF-1W Part no - 0402A00009**  
**Position A - 0402A00012**  
**Position B - 0402A00013**



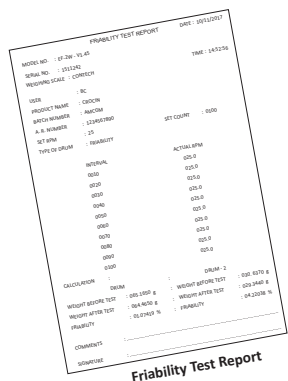
Tablet collection SS drawer  
**Position A - 0403A00001**  
**Position B - 0403A00003**



Abrasion drum  
**Part no - 0402A00008**



Printer Epson LX-310 plus  
**Part no - 0201A00020**



Friability Test Report

## 21 CFR Part II Compliant



Limited System Access



Authority Checks



Audit Trail



Metadata Storage



Electronic Signature



Fingerprint Authentication

Biometric KLOUDFACE™

## Specifications

Model	EF-2W	
	230 Volts	110 Volts
Product code	M.S. : 0420300 S.S. : 0440300	M.S. : 0410300 S.S. : 0430300
No. of drums	2	
Speed	20 RPM to 60 RPM	
Accuracy	± 0.5 RPM	
Timer	1 sec to 9 hrs. 59 min 59 sec	
Count	1 to 9999 revolutions	
Display	24 x 2 character LCD	
Printer Interface	Serial	
PC Connectivity	Standard : Serial Optional : External LAN	
Electrical power	220/230 V AC ± 10%, 50 Hz, 18 VA 100/110 V AC ± 10%, 50/60 Hz, 18 VA	
Dimensions (W x H x D)	35 cm x 43 cm x 31 cm	
Weight	12 kgs	

Electronic instrument log book



## Care & Maintenance

- Routinely check drum(s) for signs of cracks or chips
- Clean the drum(s) thoroughly using de-ionized water and dry with lint-free cloth

ELECTROLAB

## Our Products

- Complete range of Dissolution Testers • Dissolution Media Preparator • Disintegration Testers • Tablet Hardness Testers
- Electromagnetic Sieve Shakers • Tap Density Tester • Bulk Density Tester • Powder Flow Tester • Leak Tester • Peristaltic Pumps



The information contained in this document is believed to be correct but ELECTROLAB accepts no liability for any errors and reserves the right to alter specifications without notice  
 June, 2019 / 017A001

ELECTROLAB (India) PVT. LTD. (CIN NO : U33110MH2002PTC136735)

Head Office: 401, Tirupati Udyog, I. B. Patel Road, Off. Western Express Highway, Goregaon (East), Mumbai - 400 063, India.

+91 - 22 - 4041 3131 sales@electrolabgroup.com

Factory: EL 23/24, T. T. C., Electronic Zone, M. I. D. C, Mahape, Navi Mumbai - 400 710, India.

+91 - 22 - 4161 3122 www.electrolabgroup.com

ELECTROLAB  
 Sales &  
 Service  
 Worldwide